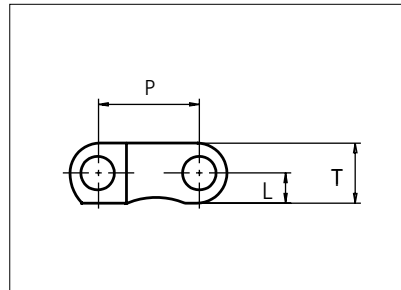
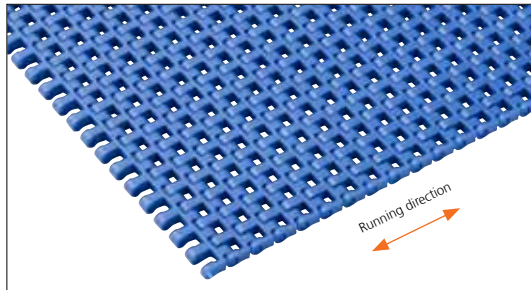




Plastic Modular Belt

Serie **uni M-TTB** Type **37%**



Straight Running
 Nominal pitch: 12.7 mm (0.50 in)
 Surface type: Flat
 Surface opening: 37%
 Backflex radius: 12.5 mm (0.49 in)
 Min flex diameter (nosebar): 19.1 mm (0.75 in)
 Pin diameter: 4.0 mm (0.16 in)

Belt material & color	PP W B	POM-D W B		mm	in		mm	in	
Pin material & color	PP W	PA6.6 B		P (Nominal)	12.7	0.50	T	7.5	0.29
				L	3.8	0.15	-	-	-

Non standard material and color: See uni Material and Color Overview.

Belt width		Permissible tensile force (Belt/pin material)				Belt weight (Belt/pin material)				*Min No drive sprocket per haft	Number of wear strips (min no)	
		POM-D/PA6.6		PP/PP		POM-D/PA6.6		PP/PP			**Carry (pcs)	**Return (pcs)
mm	in	N	lbf	N	lbf	kg/m	lb/ft	kg/m	lb/ft			
77	3.0	1733	389	1001	225	0.4	0.30	0.3	0.22	2	2	2
154	6.1	3464	779	2002	450	0.9	0.60	0.6	0.43	2	2	2
231	9.1	5196	1168	3002	675	1.3	0.90	1.0	0.65	3	2	2
308	12.1	6927	1557	4003	900	1.8	1.20	1.3	0.87	4	3	2
385	15.2	8659	1947	5003	1125	2.2	1.50	1.6	1.09	4	3	2
462	18.2	10391	2336	6004	1350	2.7	1.80	1.9	1.30	5	4	2
539	21.2	12122	2725	7004	1575	3.1	2.10	2.3	1.52	6	4	2
616	24.2	13854	3114	8005	1799	3.6	2.40	2.6	1.74	7	5	3
693	27.3	15586	3504	9005	2024	4.0	2.70	2.9	1.96	7	5	3
770	30.3	17317	3893	10006	2249	4.5	3.00	3.2	2.17	8	6	3
847	33.3	19049	4282	11006	2474	4.9	3.30	3.6	2.39	9	6	3
924	36.4	20781	4671	12007	2699	5.4	3.60	3.9	2.61	10	7	4
1001	39.4	22512	5061	13007	2924	5.8	3.90	4.2	2.82	11	7	4

Additional standard belt widths are available in steps of 77.0 mm (3.03 in). Additional non-standard belt widths are available in steps of 12.7 mm (0.50 in).

2002	78.8	45045	10126	26026	5851	11.6	7.80	8.4	5.65	21	14	7
------	------	-------	-------	-------	------	------	------	-----	------	----	----	---

Additional standard belt widths are available in steps of 77.0 mm (3.03 in). Additional non-standard belt widths are available in steps of 12.7 mm (0.50 in).

2925	115.2	65813	14795	38025	8548	17.0	11.40	12.3	8.26	30	20	10
------	-------	-------	-------	-------	------	------	-------	------	------	----	----	----

General belt tolerance is +0/-0.4% at 23°C/73°F and 50% RH. For exact belt width contact Customer Service. Non standard belt width on request.

*Max. Load per Drive Sprocket. Belt material: POM-D 1500 N (337 lbf), PP 1000 N (225 lbf).

**Max. Spacing between wear strips, Carry: 152.0 mm (6.00 in); Return: 304.0 mm (12.00 in).

= Single Link

STANDARD

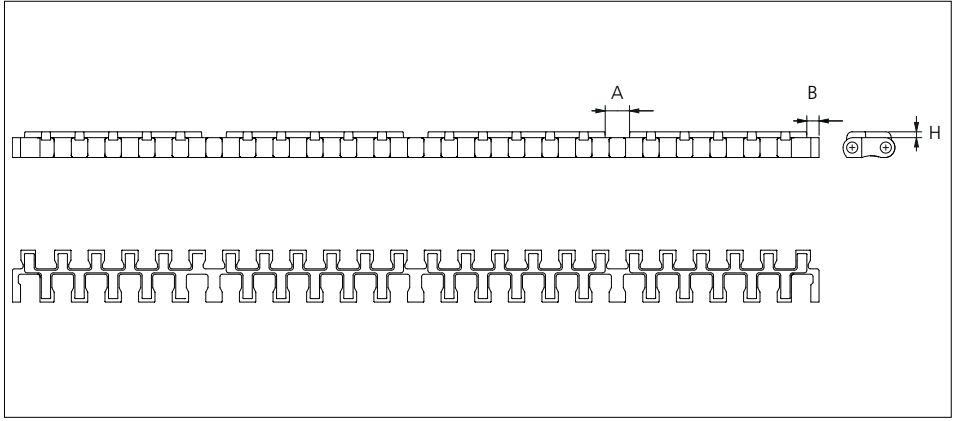
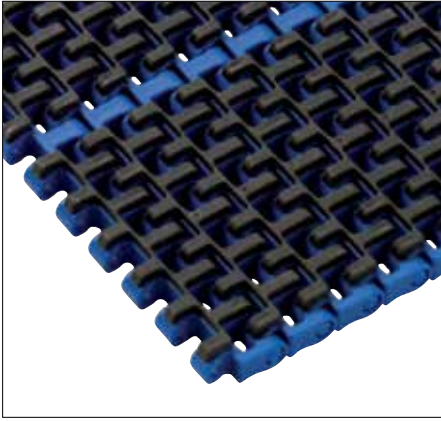
STRAIGHT RUNNING

PITCH 12.7 MM/0.50 IN



Accessories

Rubber Top

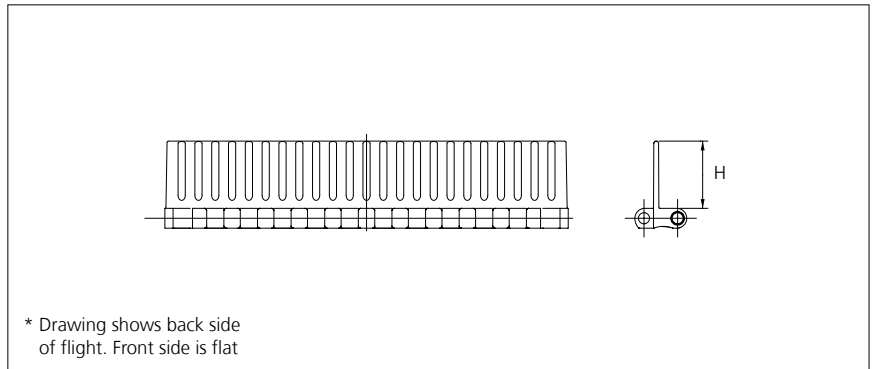
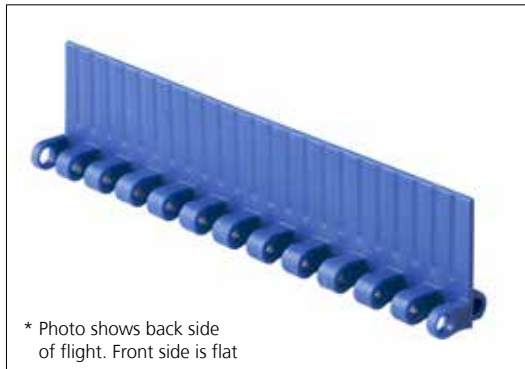


Type	Belt material & color	Rubber material & color	A		B		H		Link size	Width	
			mm	in	mm	in	mm	in		mm	in
Flat	PP W	03 W	9.2	0.36	4.6	0.18	2.2	0.09	K600	154.0	6.1
	PP B	03 K							K1200	308.0	12.1

Other Non Standard Rubber profiles: See uni Rubber Profile Overview.
 Backflex radius for Rubber Top: 28 mm (1.10 in).

Accessories

Flight

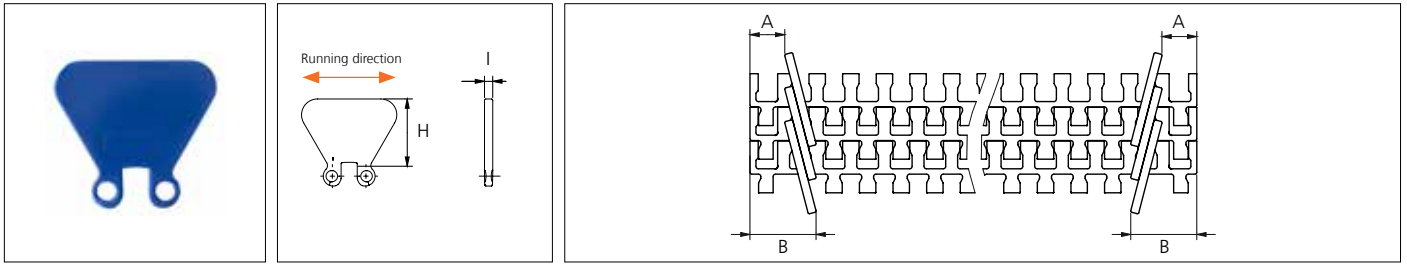


Type	Material & color	H		Link size	Width	
		mm	in		mm	in
Flat/Non Stick*	POM-D W B	25.4	1.00	K600	152.0	5.98

Non standard material and color: See uni Material and Color Overview.
 Minimum indent is for uni M-TTB flight 0 mm. Increment: 12.7 mm (0.50 in).

Accessories

Side Guard

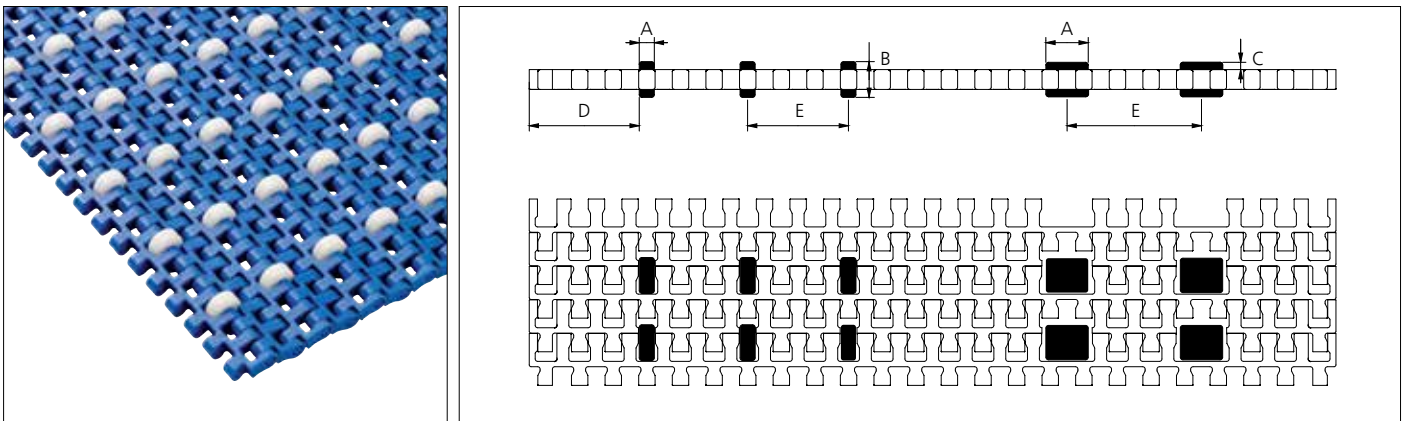


Type	Material & color	*A		B		H		I	
		mm	in	mm	in	mm	in	mm	in
Closed	POM-D W B	13.0	0.50	25.0	0.98	25.4	1.00	3.1	0.12

Non standard material and color: See uni Material and Color Overview.
 *Minimum indent is for uni M-TTB Side Guard. Increment: 12.7 mm (0.50 in).

Accessories

Roller

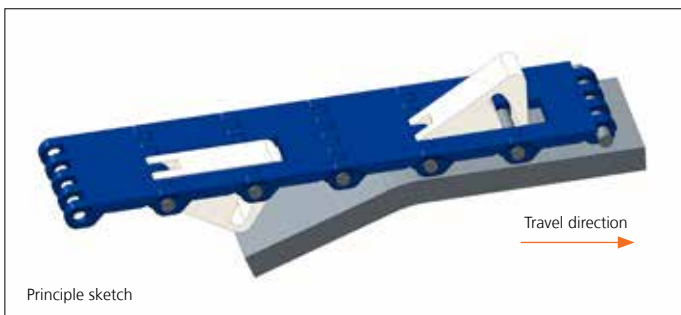


Type	Roller material & color	A		B		C		D (min)		E (min)	
		mm	in	mm	in	mm	in	mm	in	mm	in
Plastic	POM-D W	5.7	0.22	13.0	0.51	2.75	0.11	22.0	0.87	25.4	1.00
		16.0	0.62	13.0	0.51	2.75	0.11	22.0	0.87	38.1	1.50

Non standard Roller material and color: See uni Material and Color Overview.

Accessories

Non standard uni AmFlight for uni M-TTB



Other non standard option: See uni Amflight Overview.

