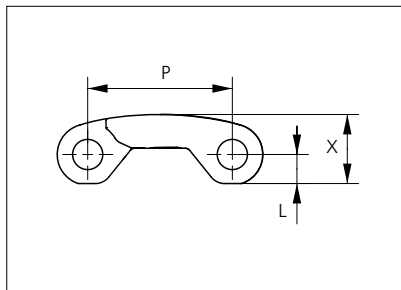




Plastic Modular Belt

Series **uni S-MPB** Type **22% CS**



Straight running belt
 Nominal pitch: 25.4 mm (1.00 in)
 Surface type: Curved Surface
 Surface opening: 22%
 Backflex radius: 23.0 mm (0.91 in)
 Pin diameter: 5.0 mm (0.20 in)

Belt material & color	POM-DI W	PP W	PP B	PE-I B		mm	in		mm	in
	Pin material & color	PP W		PP B	PE N	P (Nominal)	25.4	1.00	X	12.1
					L	5.2	0.20	-	-	-

Non standard material and color: See uni Material and Color Overview.

Alternative pin and lock materials: Lockpin: PBT LG PA6.6 N D

Belt width		Permissible tensile force (Belt/pin material)						Belt weight (Belt/pin material)						*Min. No. drive sprocket per shaft	Number of wear strips (Min. No.)	
		POM-DI/PP		PP/PP		PE-I/PE		POM-DI/PP		PP/PP		PE-I/PE			**Carry (pcs)	**Return (pcs)
mm	in	N	lbf	N	lbf	N	lbf	kg/m	lb/ft	kg/m	lb/ft	kg/m	lb/ft			
77	3.0	1810	407	732	164	604	136	0.5	0.36	0.4	0.24	0.4	0.24	2	2	2
153	6.0	3596	808	1454	327	1201	270	1.1	0.72	0.7	0.48	0.7	0.48	2	2	2
229	9.0	5383	1210	2176	489	1798	404	1.6	1.08	1.1	0.72	1.1	0.72	2	2	2
305	12.0	7169	1612	2898	652	2395	538	2.1	1.44	1.4	0.96	1.4	0.96	3	3	2
381	15.0	8956	2013	3620	814	2992	672	2.7	1.79	1.8	1.20	1.8	1.20	3	3	2
457	18.0	10742	2415	4343	976	3588	807	3.2	2.15	2.1	1.44	2.1	1.44	4	4	2
533	21.0	12529	2816	5065	1139	4185	941	3.7	2.51	2.5	1.68	2.5	1.68	4	4	2
609	24.0	14315	3218	5787	1301	4782	1075	4.3	2.87	2.9	1.92	2.9	1.92	5	5	3
685	27.0	16102	3620	6509	1463	5379	1209	4.8	3.22	3.2	2.16	3.2	2.16	5	5	3
761	30.0	17888	4021	7231	1626	5975	1343	5.3	3.58	3.6	2.40	3.6	2.40	6	6	3
837	33.0	19675	4423	7954	1788	6572	1477	5.9	3.94	3.9	2.64	3.9	2.64	6	6	3
913	36.0	21461	4824	8676	1950	7169	1612	6.4	4.30	4.3	2.88	4.3	2.88	7	7	4
989	38.9	23248	5226	9398	2113	7766	1746	6.9	4.65	4.6	3.12	4.6	3.12	7	7	4

Additional standard belt widths are available in steps of 76.0 mm (2.99 in). Additional non-standard belt widths are available in steps of 12.7 mm (0.50 in).

1977	77.8	46460	10444	18782	4222	15519	3489	13.8	9.30	9.3	6.24	9.3	6.24	14	14	7
------	------	-------	-------	-------	------	-------	------	------	------	-----	------	-----	------	----	----	---

Additional standard belt widths are available in steps of 76.0 mm (2.99 in). Additional non-standard belt widths are available in steps of 12.7 mm (0.50 in).

2965	116.7	69678	15664	28168	6332	23275	5232	20.8	13.95	13.9	9.37	13.9	9.37	20	20	10
------	-------	-------	-------	-------	------	-------	------	------	-------	------	------	------	------	----	----	----

General belt tolerance is +0/-0.4% at 23°C/73°F and 50% RH. For exact belt width contact Customer Service. Non standard belt width on request.

*Max. Load per Drive Sprocket. Belt material: POM-DI 1100 N (247 lbf), PP 500 N (112 lbf), PE 500 N (112 lbf).

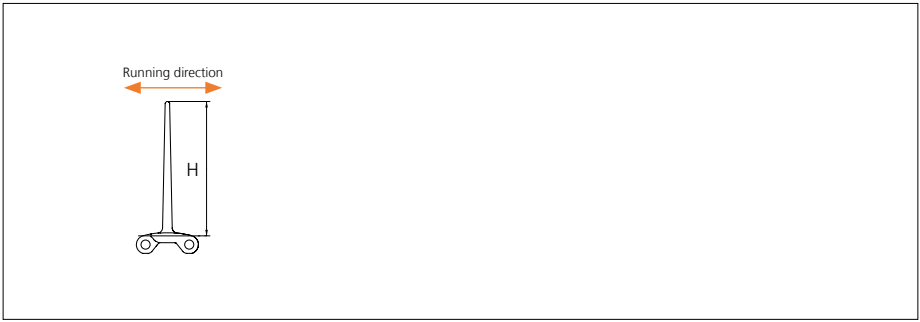
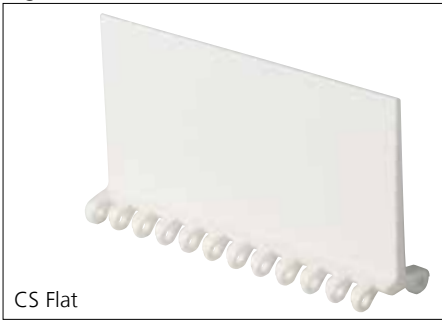
**Max. Spacing between wear strips, Carry: 152 mm (6 in); Return: 304 mm (12 in).

 = Single Link



Accessories

Flight



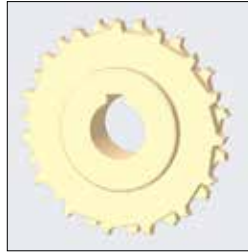
Type	Material & color	H		Link size	Width		Indent both sides	
		mm	in		mm	in	mm	in
CS Flat	POM-D <input type="checkbox"/> W PP-I <input type="checkbox"/> W <input type="checkbox"/> B PE-I <input type="checkbox"/> N <input type="checkbox"/> B	76.2	3.00	K600	151.9	5.98	00.0	0.00

Sprocket

No. of teeth	Bore size										Overall diameter		Pitch-diameter		Hub-diameter		Dimension A		Dimension B		Double row/Two way	Molded	Machined
	Pilot bore																						
		mm	in	0.75	0.78	1.00	1.18	1.25	1.50	1.57	2.36	mm	in	mm	in	mm	in	mm	in				
Z06	✓	●	●																		✓	✓	
Z08	✓				●	●	●														✓		✓
Z10	✓				●	●	●		●												✓	✓	
Z12	✓				●	●	●		●	●											✓	✓	
Z15	✓				●	●	●	■	●	●	■										✓	✓	
Z20	✓					●	●	■	●	●	■	■									✓	✓	

■ Molded sprocket

● Machined sprocket



Other sprocket sizes are available upon request.

Other bore sizes on sprockets are available upon request.

Round bores are always delivered with keyway.

Max. load per sprocket shown does not take bore size into account.

Please also ensure that sufficient size shaft is chosen for corresponding load.

Width of tooth = Single row: 6.35 mm (0.25 in)

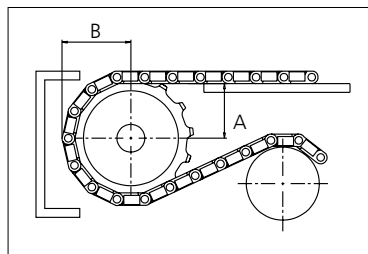
= Double row: 12.7 mm (0.50 in)

Width of One-part sprocket = Double row: 25.0 mm (0.98 in)

uni UltraClean Two-Part Sprocket

No. of teeth	Bore size		Overall diameter		Pitch-diameter		Hub-diameter		Dimension A		Dimension B		Single row/One way	Moulded
	in	1.57												
	mm	40.0	mm	in	mm	in	mm	in	mm	in	mm	in		
Z12	■		98.6	3.88	98.1	3.86	80.0	3.15	42.3	1.67	54.42	2.14	✓	✓
Z15	■		123.1	4.84	122.2	4.81	80.0	3.15	54.54	2.15	66.43	2.62	✓	✓
Z20	■		163.8	6.44	162.4	6.39	118.0	4.65	75.08	2.96	86.53	3.41	✓	✓

■ Moulded uni UltraClean TwoPart Sprocket



Width of UltraClean Two-part sprocket = Single row: 44.0 mm (1.73 in)

Width of UltraClean Two-part tooth = Single row: 6.35 mm (0.25 in)

uni Retainer Rings: See uni Retainer Ring data sheet.

For correct sprocket position: See uni Assembly Instructions for uni S-MPB.

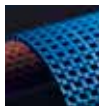
For more detailed sprocket information, contact Customer Service.



Synthetic Belts



Endless Woven Belts



Modular Belts



Engineered Belts



Homogeneous Belts



Fabrication & Service

**Expert advice and quality solutions
for all your belting needs.**
ammeraalbeltech.com

Ammeraal Beltech Modular A/S
Hjulgagervej 21
DK-7100 Vejle
T +31 7572 3100

amma.com

This information is subject to alteration due to continuous development. Ammeraal Beltech will not be held liable for the incorrect use of the above stated information. This information replaces previous information. All activities performed and services rendered by Ammeraal Beltech are subject to general terms and conditions of sale and delivery, as applied by its operating companies.

Member of Ammega Group.